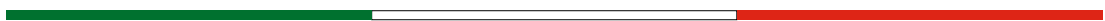
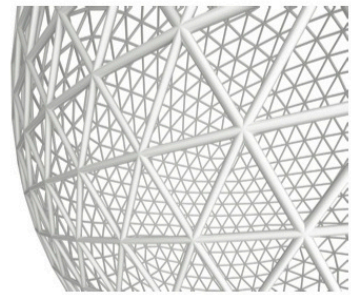




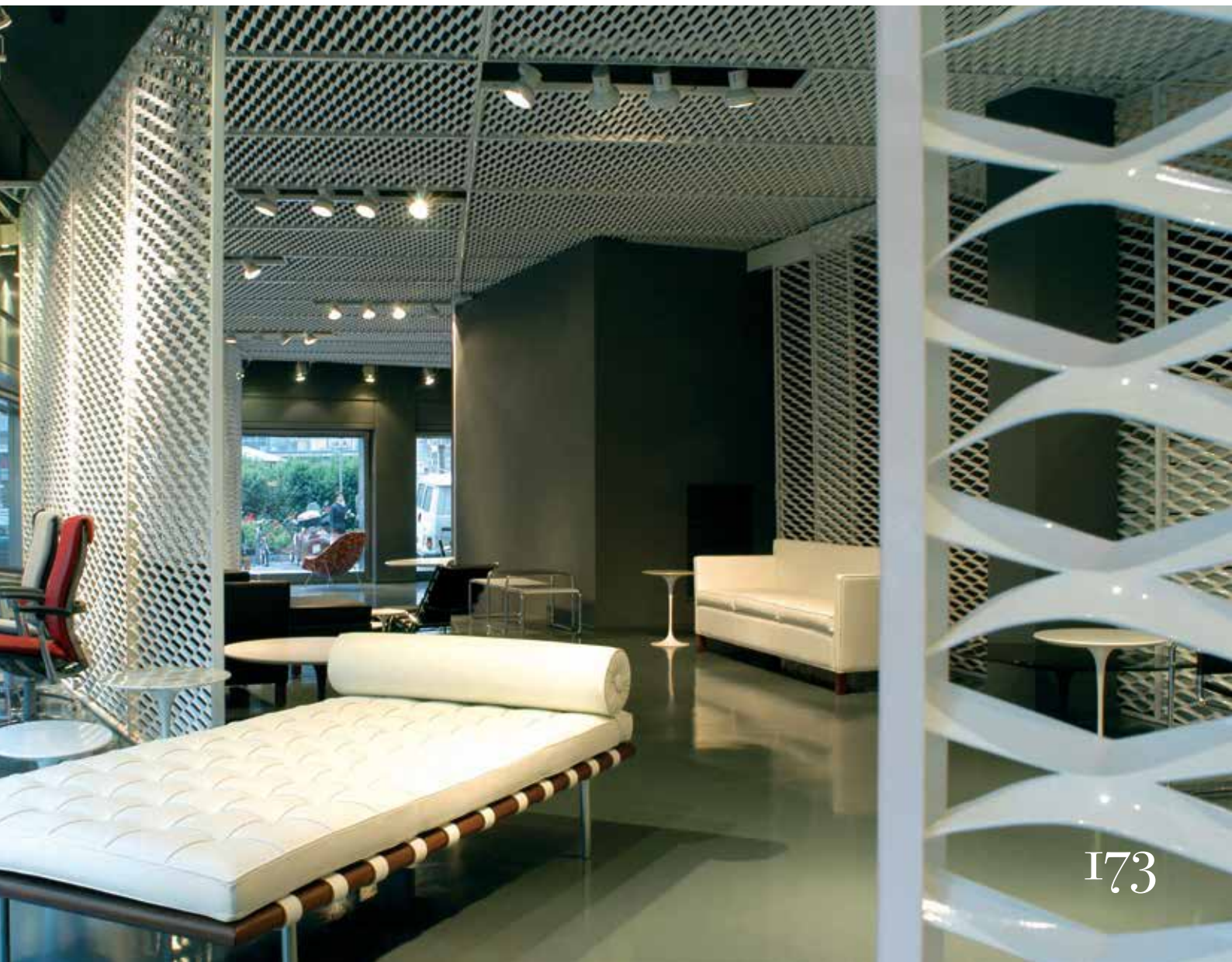
M A D E I N I T A L Y

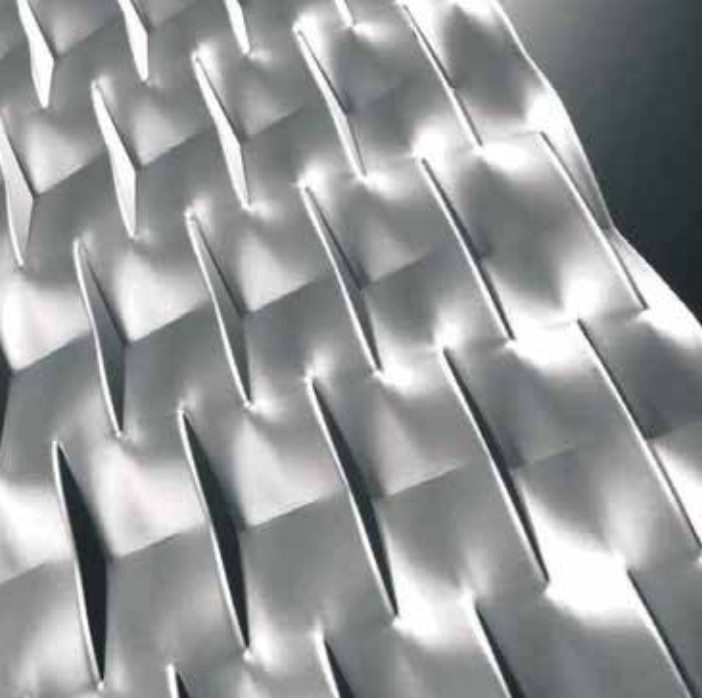




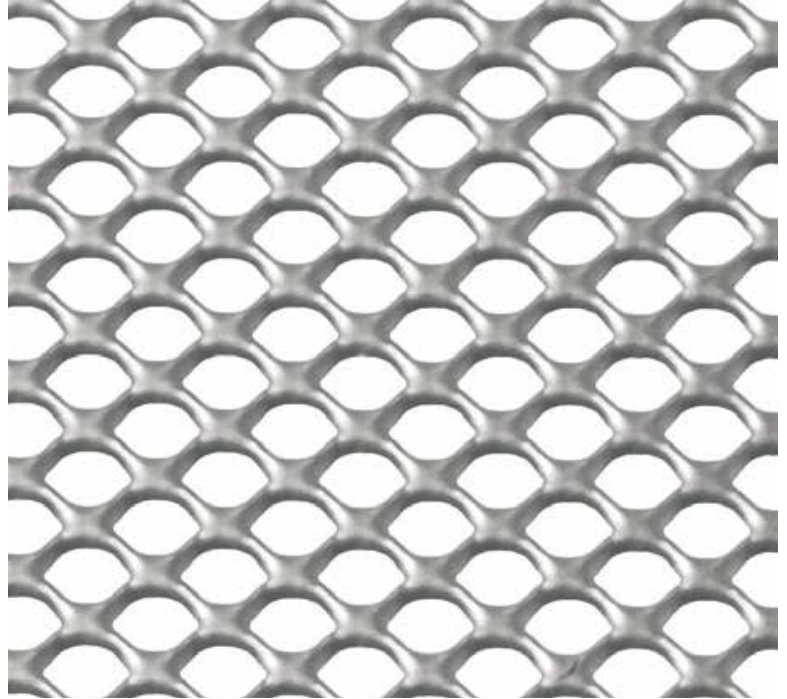
6 | EXPANDED METAL SHEETS & STAINLESS STEEL WIRE MESH



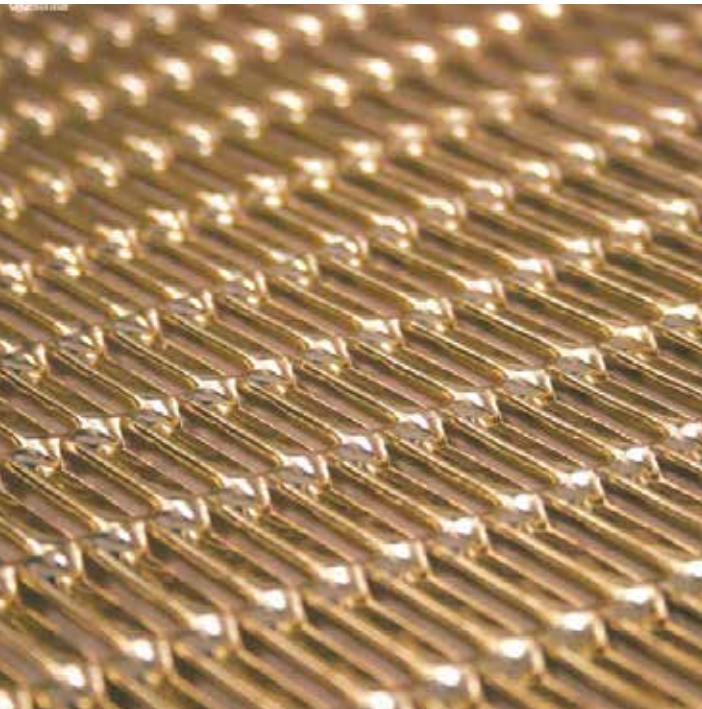




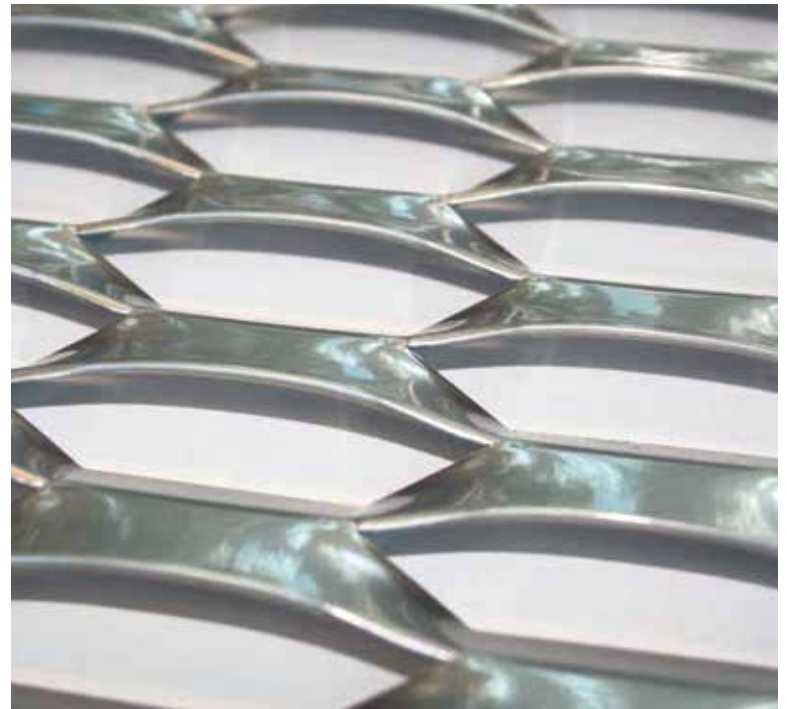
BROKLYN



CHELSEA

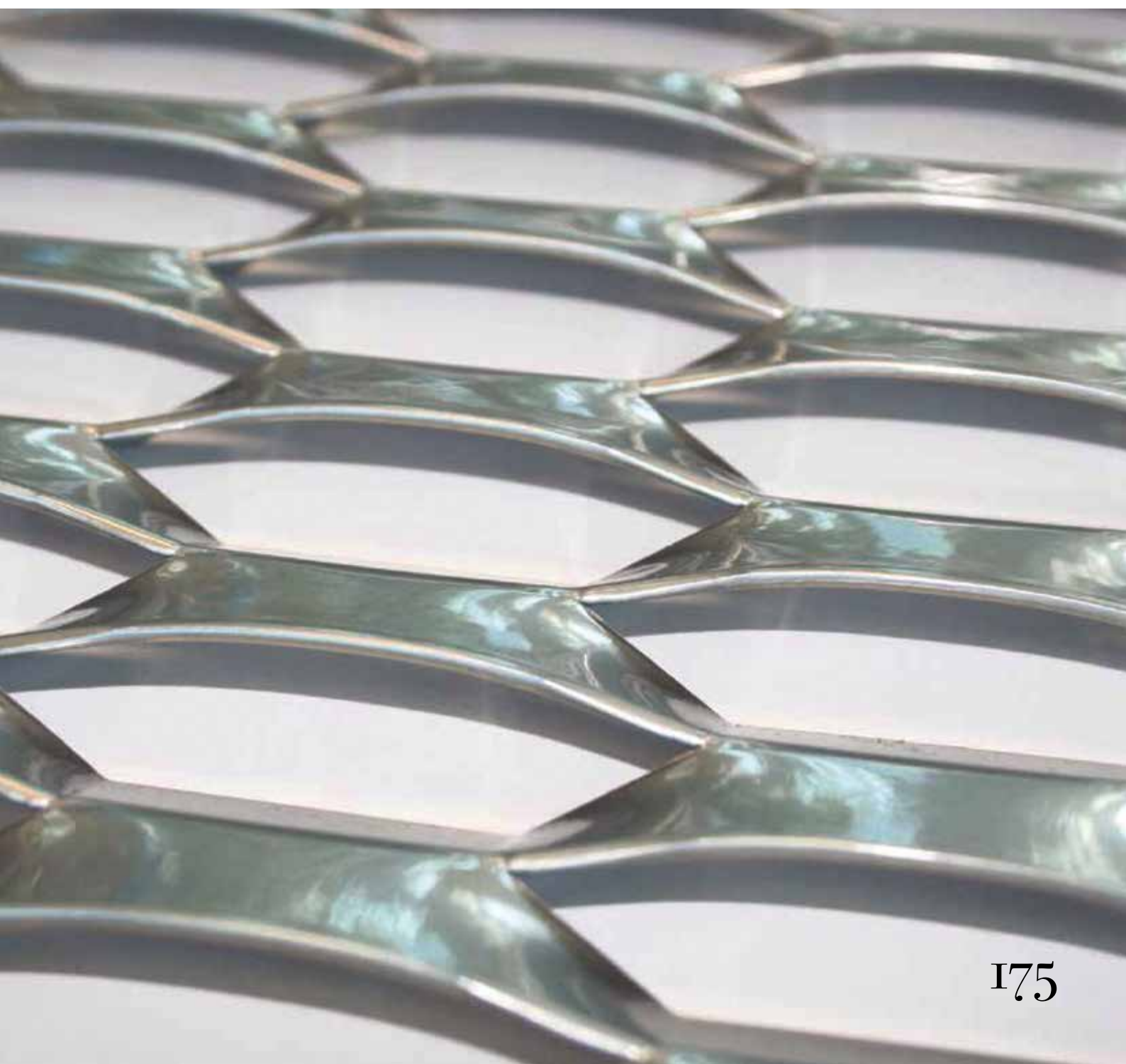


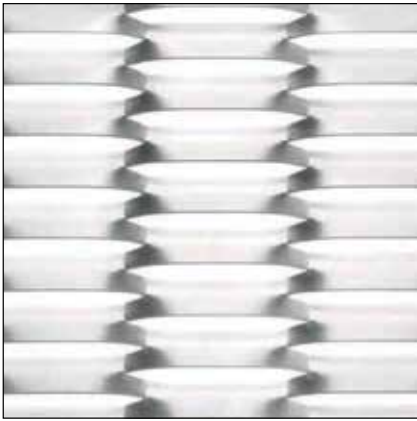
RIBERA



OPERA

OPERA





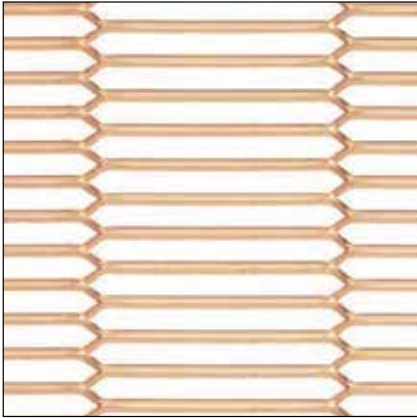
BERG



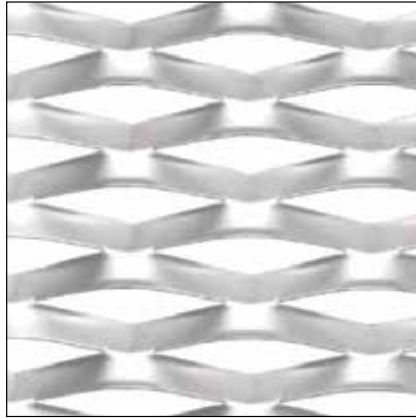
BIG BROADWAY



NOTREDAME



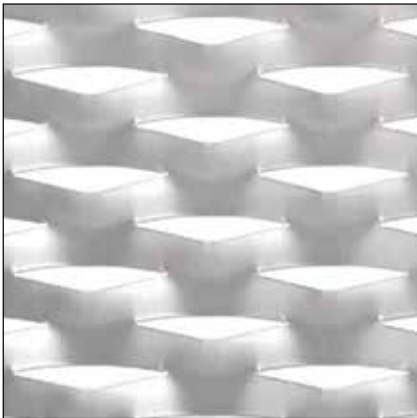
MARAIS



RAVAL



PICADILLY



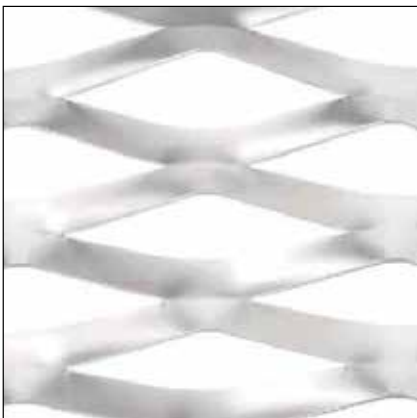
FLAMINIO



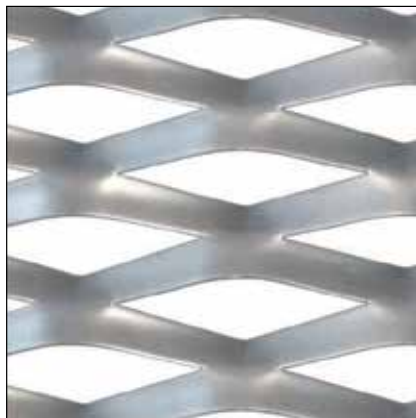
EXPO



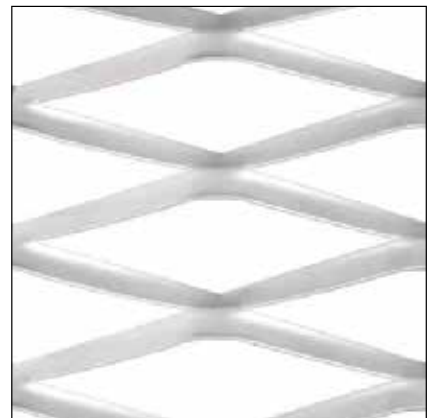
MARACANA



MANHATTAN



SKYLINE



HOLLYWOOD

MANHATTAN















Sport For Life

مخرج (شمال) ↑
Exit (North)

← 101 - 110
119 - 111



LUSAIL SPORTS CLUB - QATAR







DUBAI CREEK - FACADE CLADDING VIEW - UAE





MATRIX TOWER - DUBAI SPORTS CITY - UAE



SWITZERLAND



MILANO • ITALY







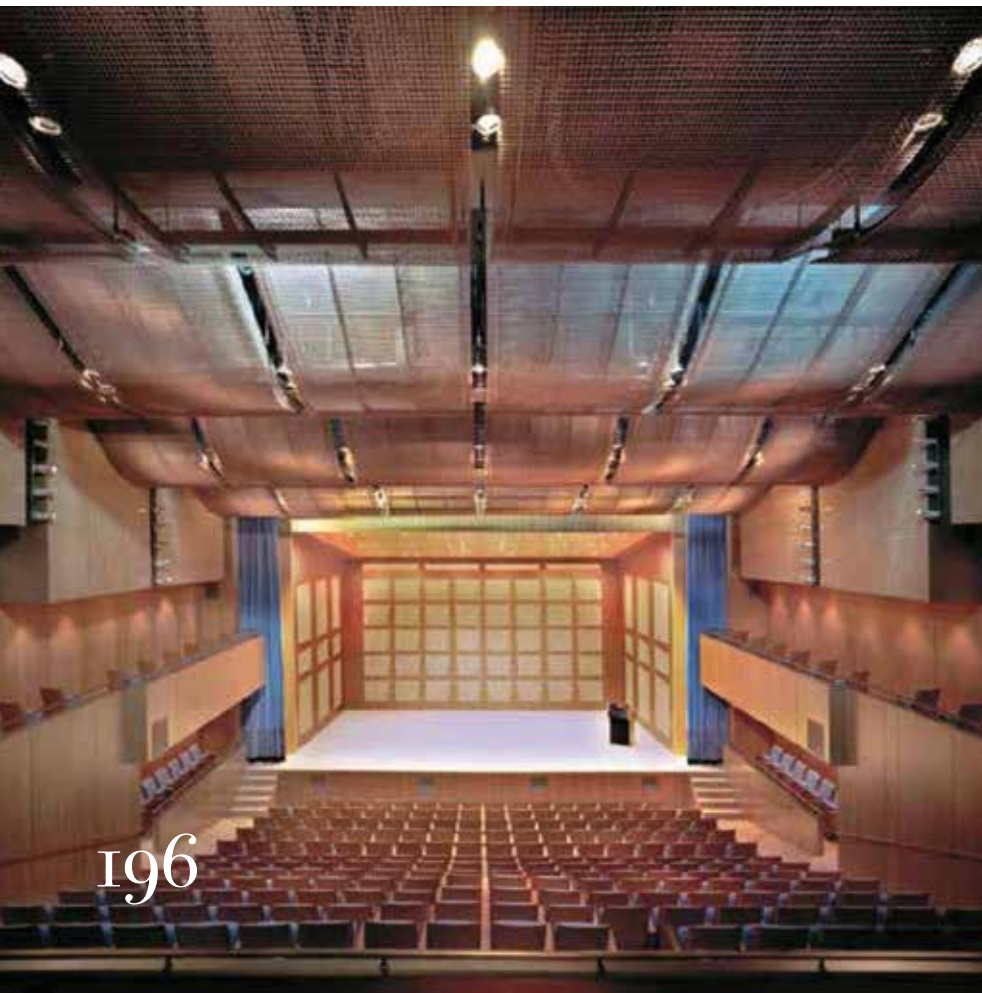
EXHIBITION BUILDING - ITALY



OFFICE BUILDING - ITALY



ATHENS CONCERT HALL - GREECE



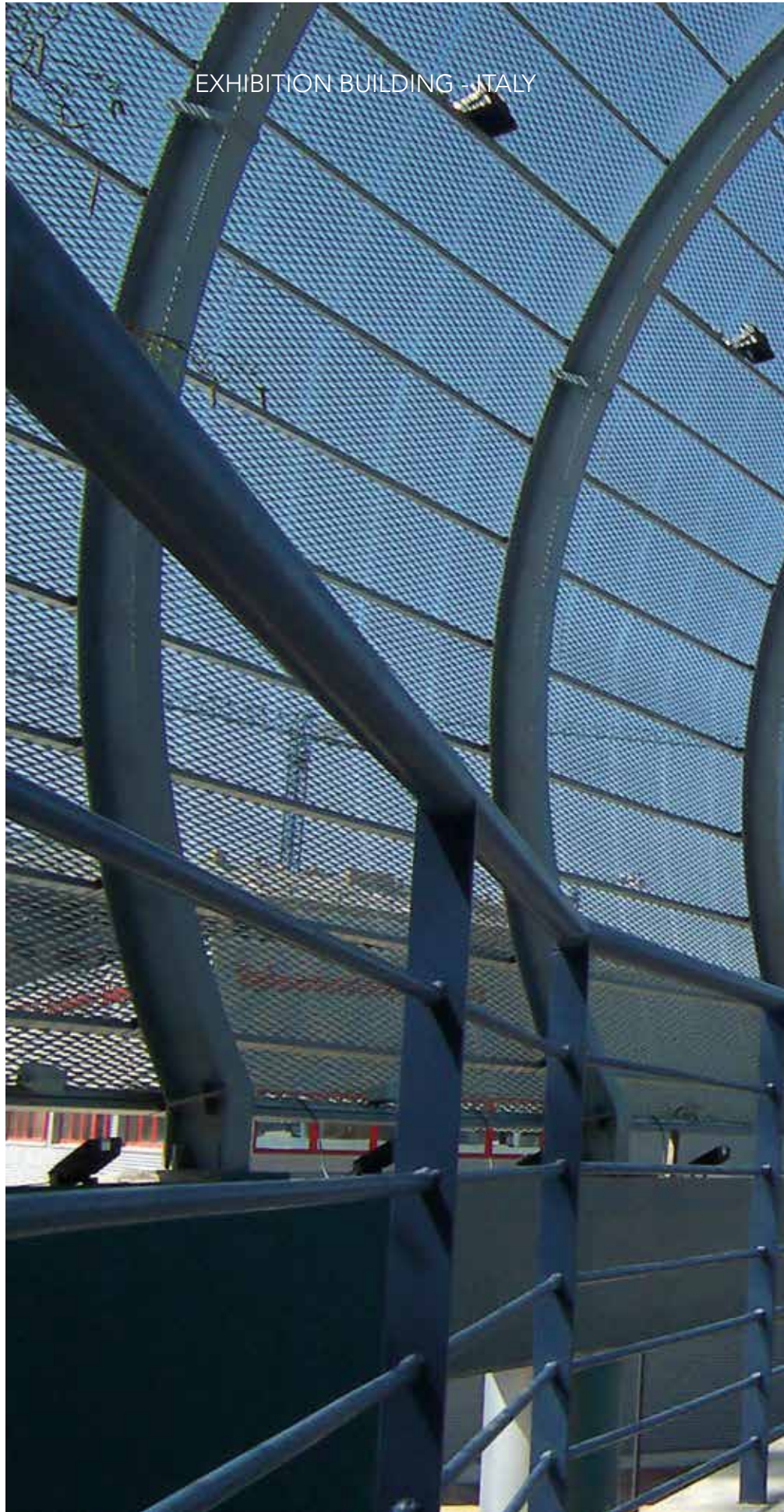
196



ATHENS - GREECE



EXHIBITION BUILDING - ITALY



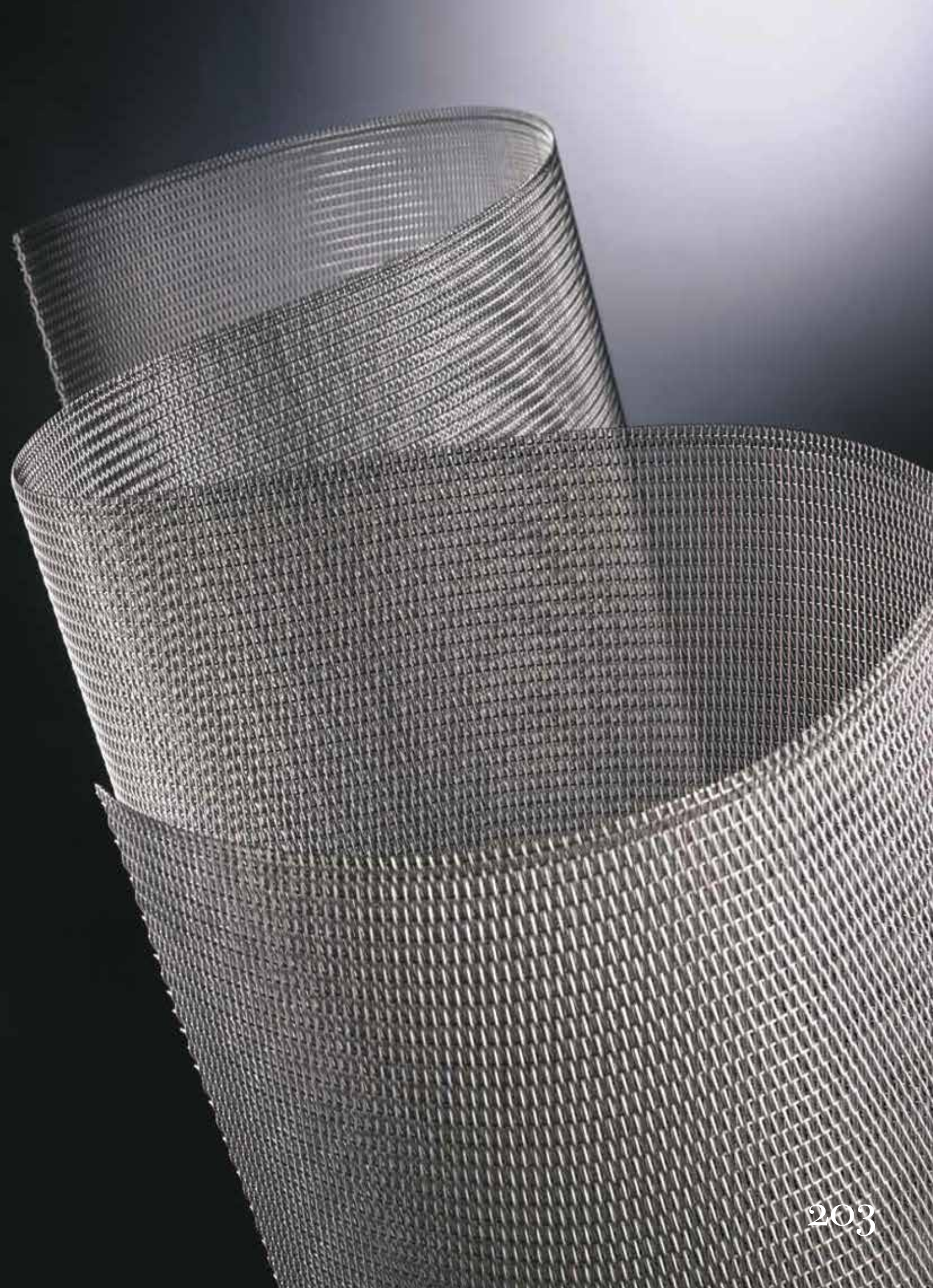


STADIUM PROJECT - BRAZIL



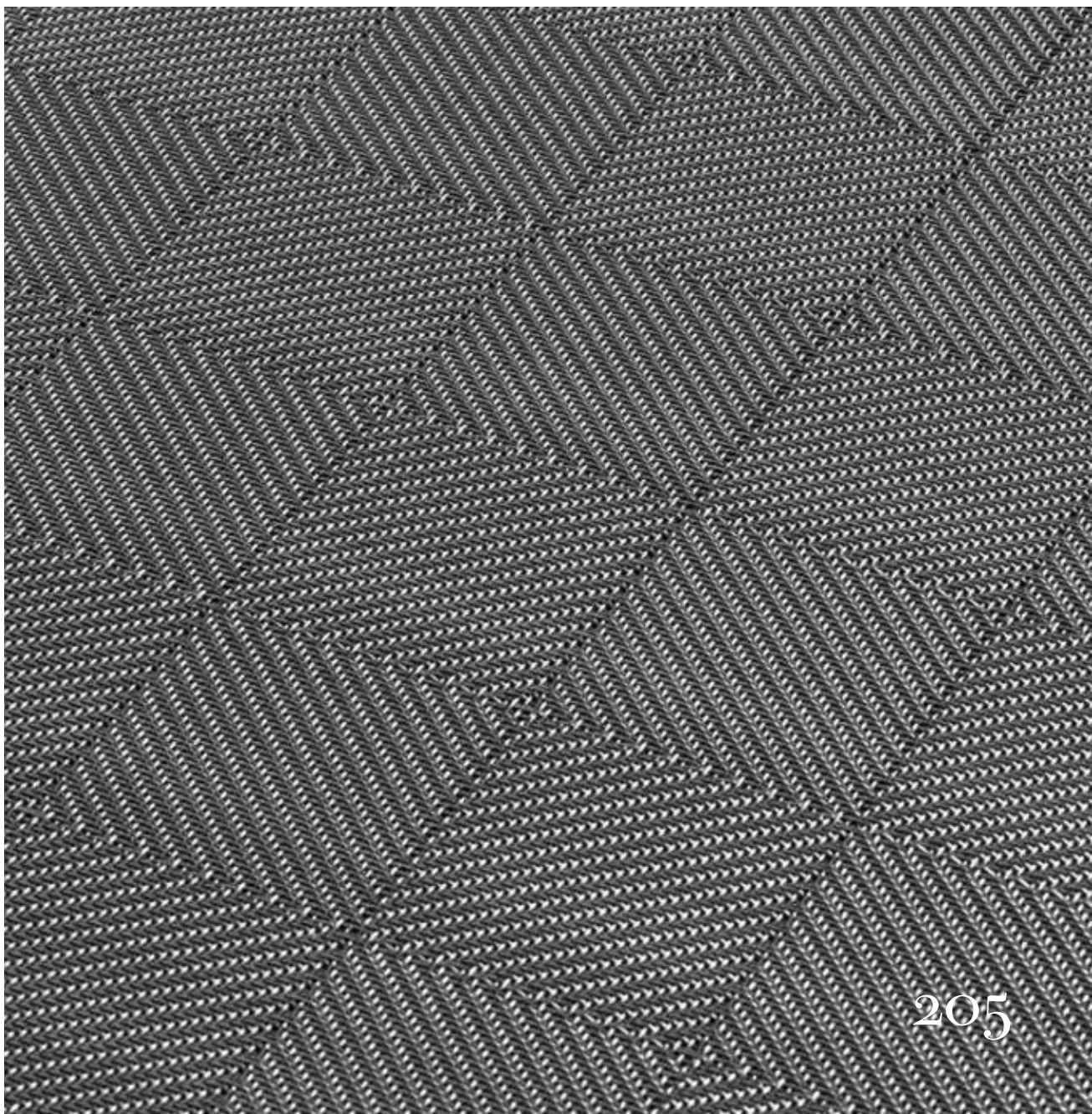








TWEED



FIXING SYSTEMS



Direct U



DirectFix 4U



DirectFix UW



DirectFix T



DirectFix TL



HangFix L-back



HangFix L-front



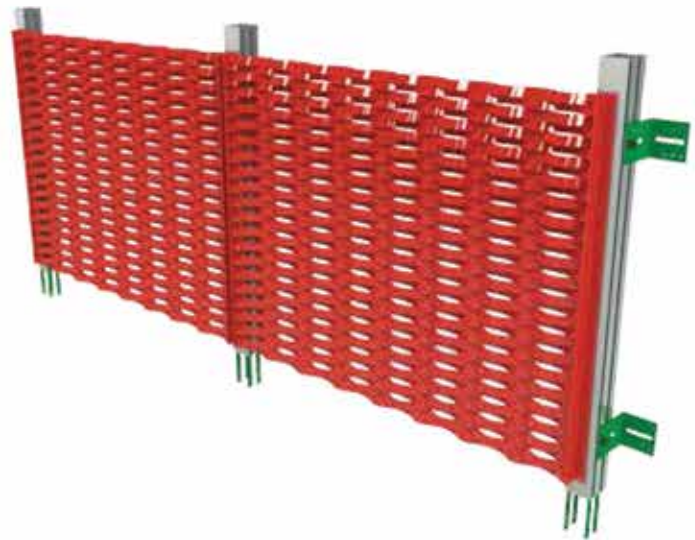
HangFix L-bent



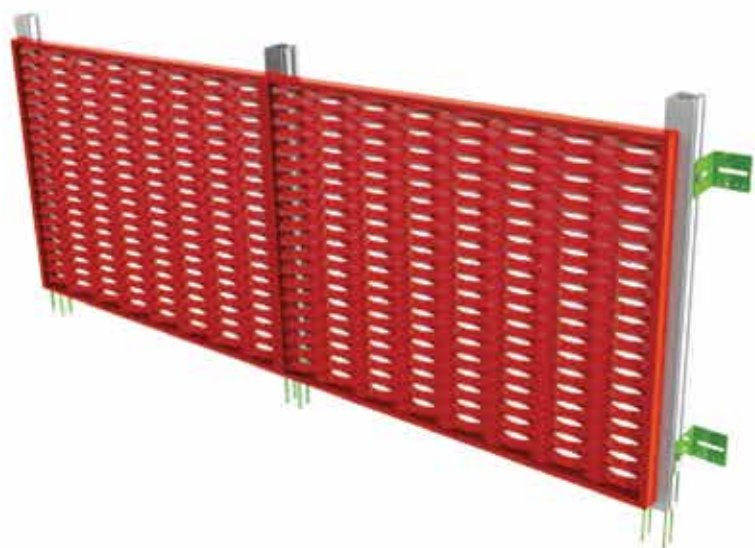
HangFix T-side



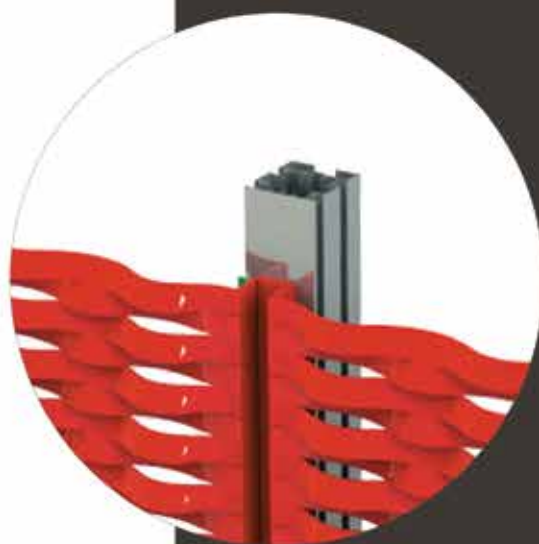
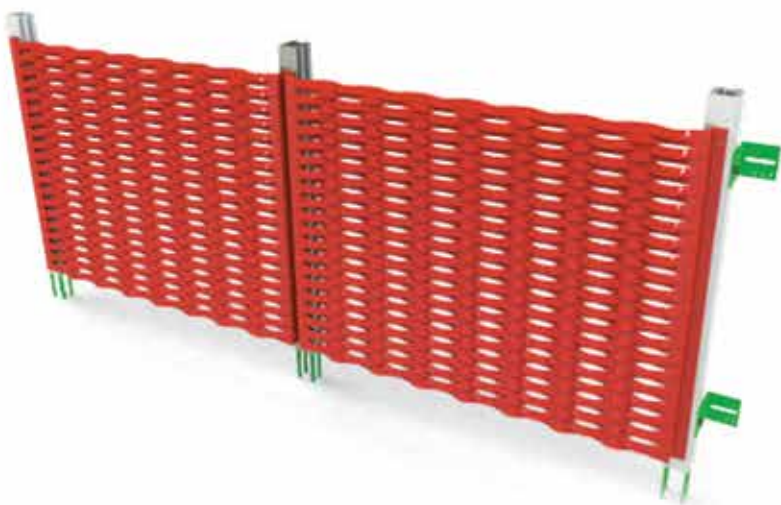
Direct U



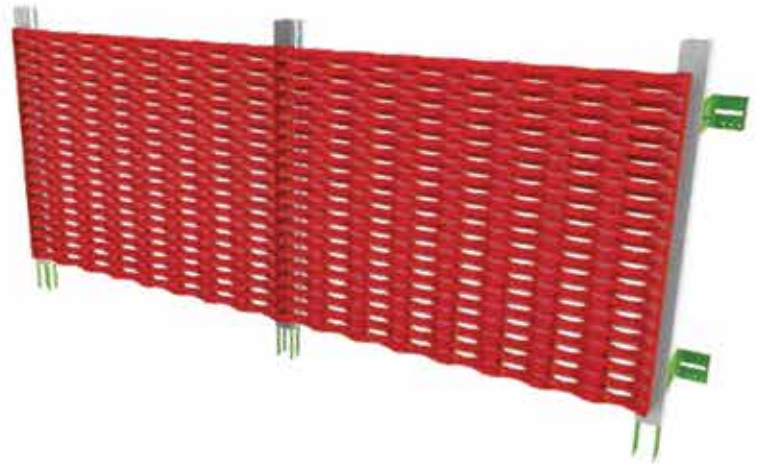
DirectFix 4U



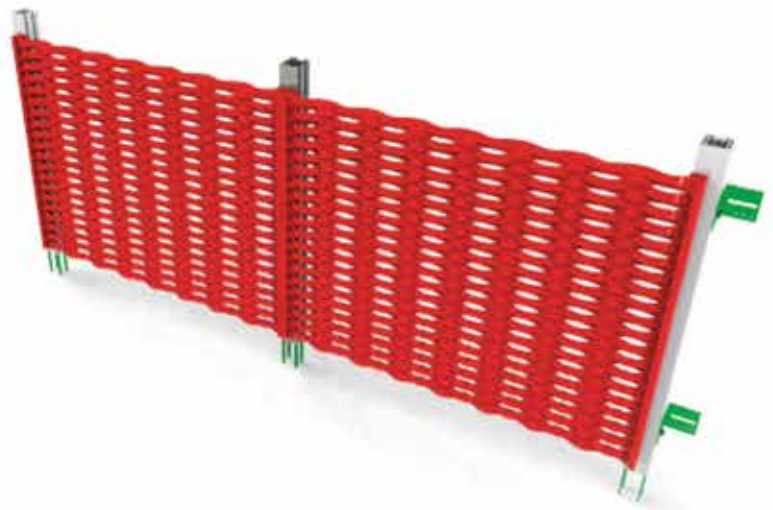
DirectFix UW



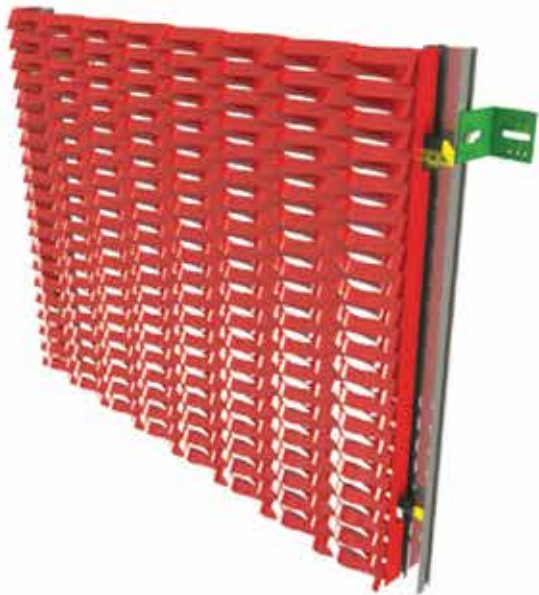
DirectFix T



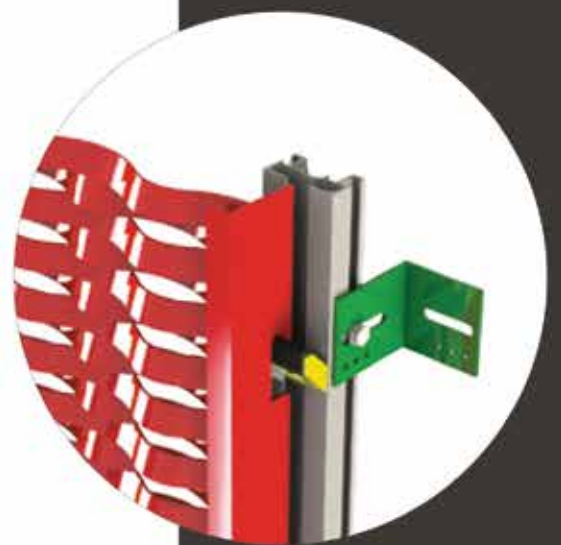
DirectFix TL



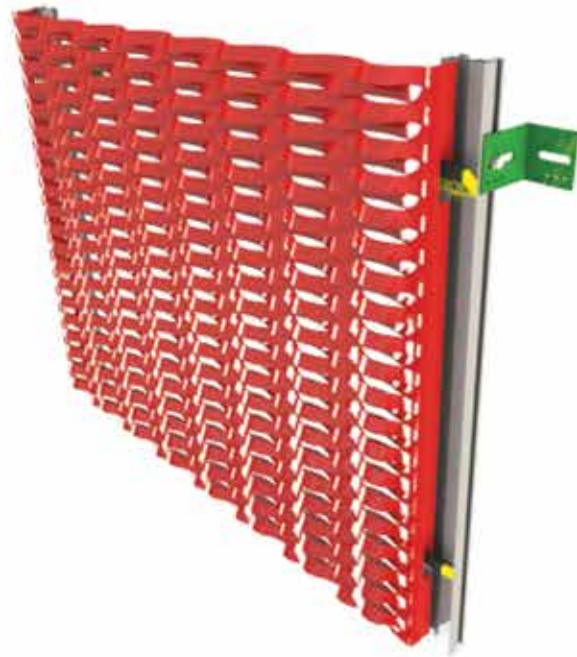
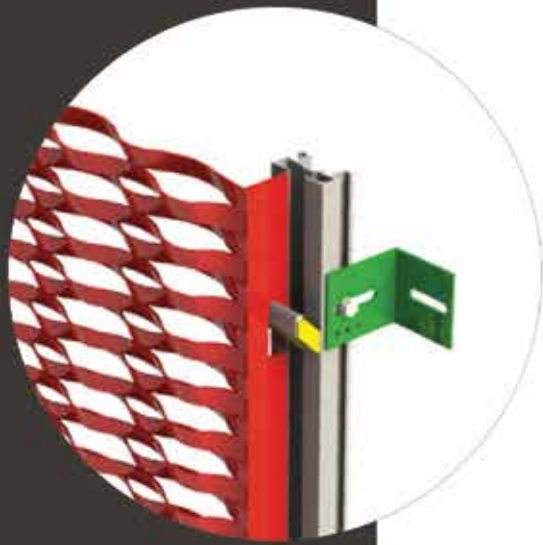
HangFix L-back



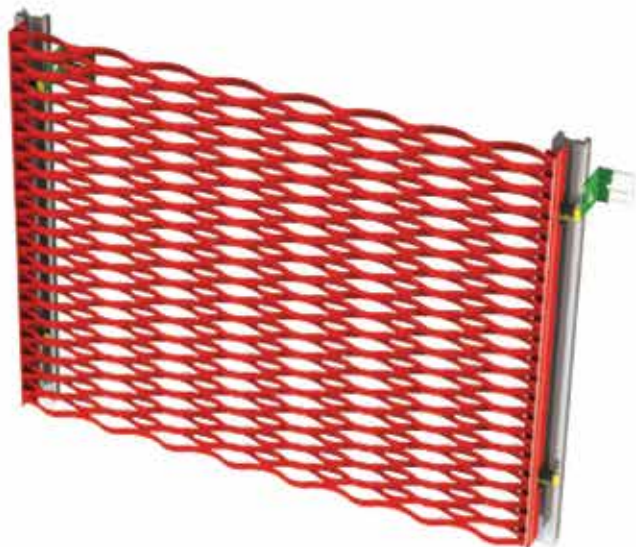
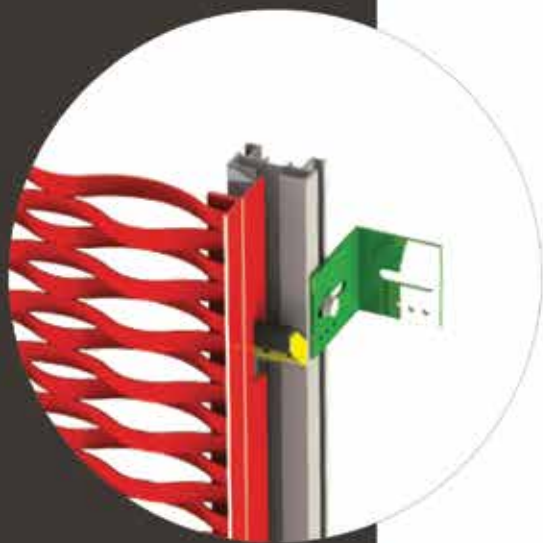
HangFix L-front



HangFix L-bent



HangFix T-side





BAC

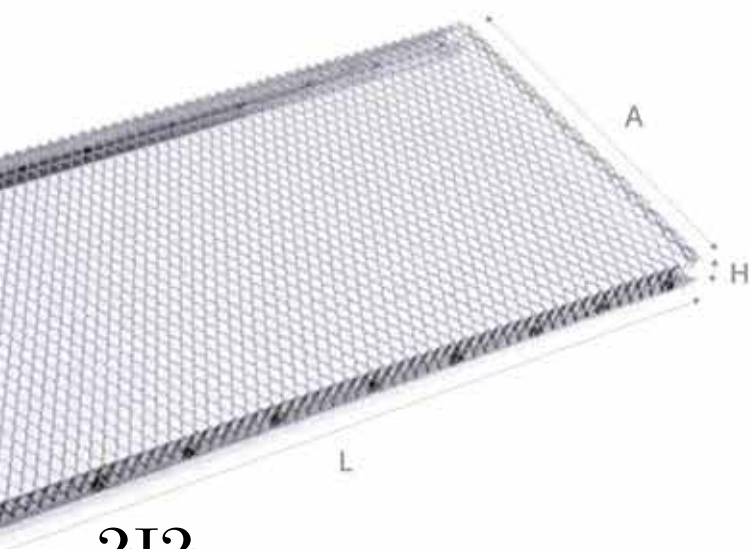
Bended and framed panels

SIZE OPTIONS

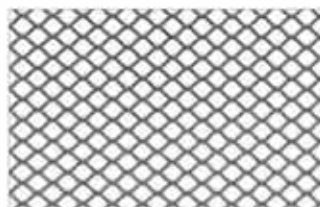
A - from 250 up to 600 mm

L - up to 3000 mm

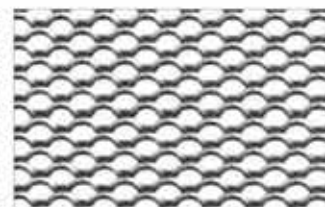
H - 30 / 40 / 50 mm



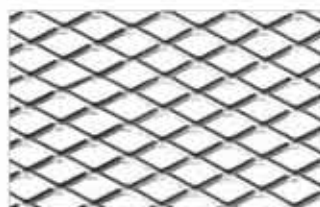
MESH OPTIONS



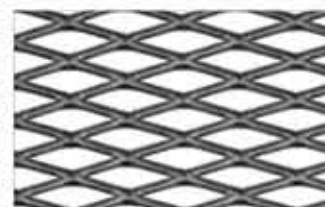
Q6 × 4.5 × 1.2 × 1



D10 × 7 × 1.5 × 1 flattened



16 × 8 × 2 × 1



29 × 10 × 2 × 1.5

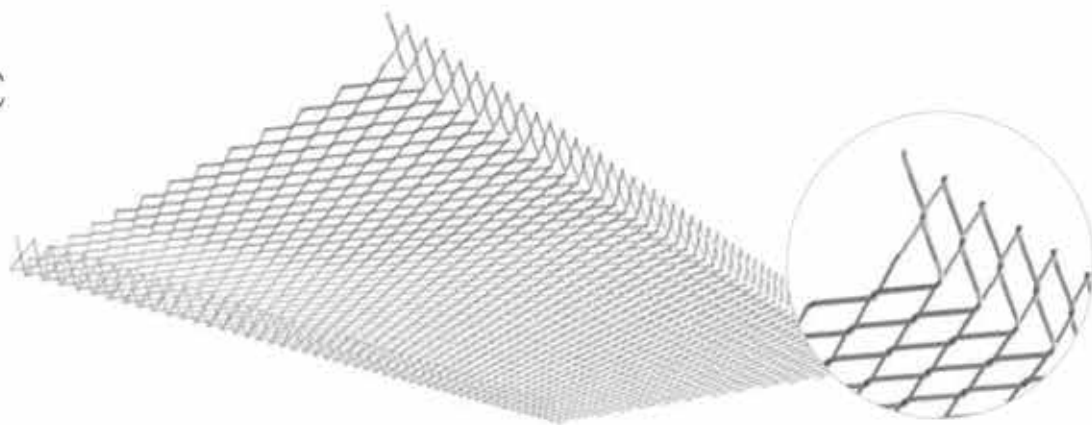


40 × 17 × 2.2 × 1.5

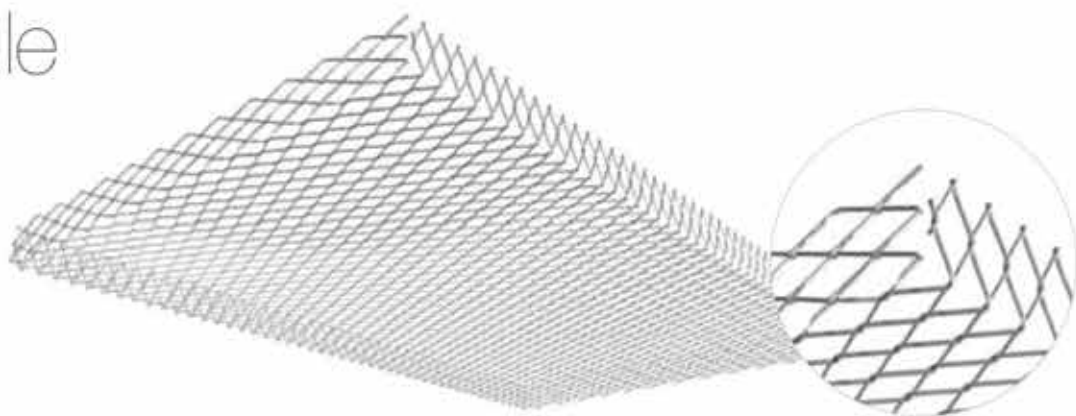


62 × 23 × 8 × 0.6

Basic



Module



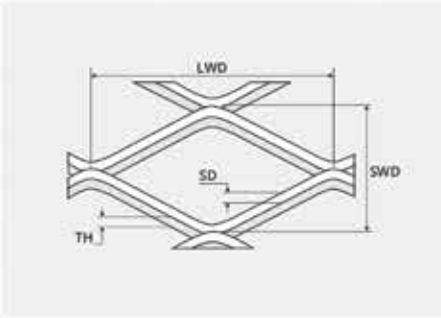
Evo



Evo Plus

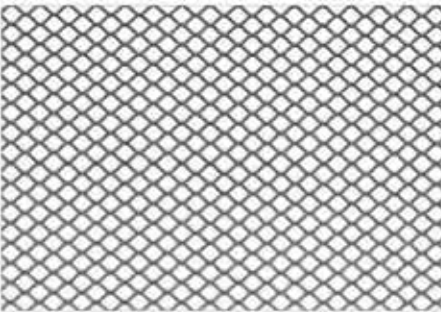


MESH TYPES



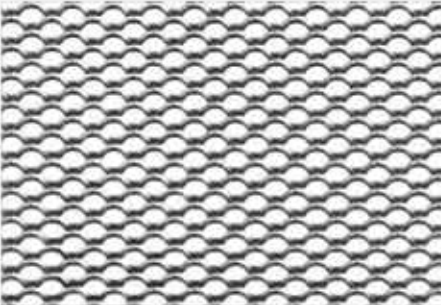
LEGEND

- LWD: Long way diagonal
- SWD: Short way diagonal
- SW: Strand width
- TH: Thickness
- Open Area
- Material
- Weight



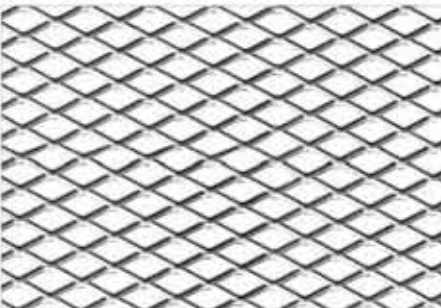
Q6 × 4.5 × 1.2 × 1

LWD	SWD	SW	TH	Open Area	Material	Weight
6 mm	4.5 mm	1.2 mm	1 mm	60 %	Aluminium	1.45 Kg/mq
Mild steel, galvanized steel, stainless steel						4.20 Kg/mq



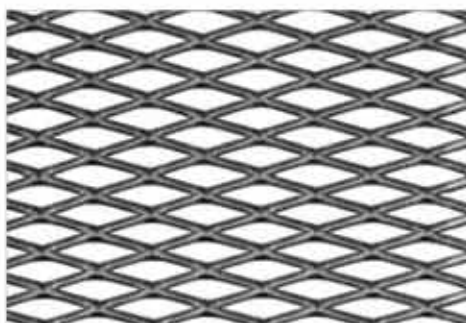
D10 × 7 × 1.5 × 1 flattened

LWD	SWD	SW	TH	Open Area	Material	Weight
10 mm	7 mm	1.5 mm	1 mm	58 %	Aluminium	1.15 Kg/mq
Mild steel, galvanized steel, stainless steel						3.30 Kg/mq



16 × 8 × 2 × 1

LWD	SWD	SW	TH	Open Area	Material	Weight
16 mm	8 mm	2 mm	1 mm	63 %	Aluminium	1.00 Kg/mq
Mild steel, galvanized steel, stainless steel						3.00 Kg/mq



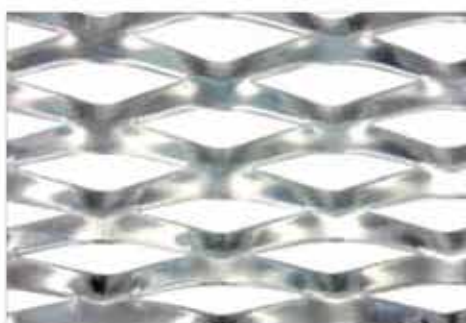
29 x 10 x 2 x 1.5

LWD	SWD	SW	TH	Open Area	Material	Weight
29 mm	10 mm	2 mm	1.5 mm	60 %	Aluminium	1.65 Kg/mq
Mild steel, galvanized steel, stainless steel						4.75 Kg/mq



40 x 17 x 2.2 x 1.5

LWD	SWD	SW	TH	Open Area	Material	Weight
40 mm	17 mm	2.2 mm	1.5 mm	70 %	Aluminium	1.05 Kg/mq
Mild steel, galvanized steel, stainless steel						3.05 Kg/mq



62 x 23 x 8 x 0.6

LWD	SWD	SW	TH	Open Area	Material	Weight
62 mm	23 mm	8 mm	0.6 mm	35 %	Aluminium	1.15 Kg/mq
Mild steel, galvanized steel, stainless steel						3.30 Kg/mq